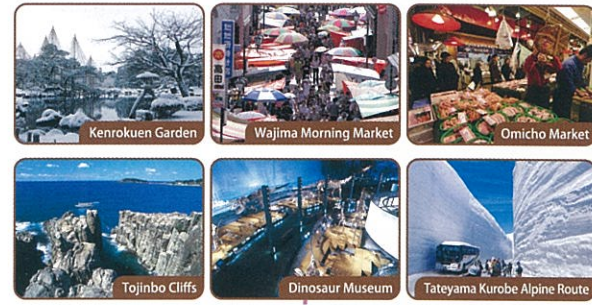


# Tourist Map of Japan

## Hokuriku Region



## Chugoku Region



## Shikoku Region



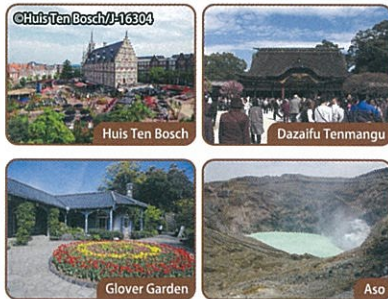
## Tokai Region



## Kinki Region



## Kyushu Region



**YUKAI Resort Co., Ltd.**

TEL: +81 (0)75-223-1276 / FAX: +81 (0)75-223-1287

URL: <http://yukai-r.jp>

人生は旅

YUKAI RESORT



日本の温泉を身近にする

**湯快リゾートグループ**

Yukai Resort Group



# Buffet style

We serve a variety of foods such as Japanese, Western, and Chinese dishes including dessert and the local menu for dinner and breakfast in buffet style. Moreover, we offer free refills on soft drinks. You can enjoy a variety of menus including traditional Japanese food and dish hot and fresh from oven.



**Hokuriku** Ishikawa prefecture • Yamashiro Onsen  
**SAICHORAKU**

2-10-3 Kikyogaoka Yamashiro Onsen, Kaga-shi, Ishikawa prefecture  
 ✈️ Approximately thirty (30) minutes from Komatsu Airport by car  
 🛏️ 67 guest rooms in total/ 62 guest rooms with bath and shower  
 🛀 Open-air bath • Ancient cypress bath • Sauna  
 📶 Free WiFi is available in the lobby and all guest rooms

**Hokuriku** Ishikawa prefecture • Awazu Onsen  
**AWAZU GRAND HOTEL**

Wa-36 Awazu-machi, Komatsu-shi, Ishikawa prefecture  
 ✈️ Approximately twenty-five (25) minutes from Komatsu Airport by car  
 🛏️ 97 guest rooms in total/ 67 guest rooms with bath and shower  
 🛀 Large public bath  
 📶 Free WiFi is available in the lobby and all guest rooms

**Hokuriku** Ishikawa prefecture • Awazu Onsen  
**AWAZU GRAND HOTEL BEKKAN**

I-35 Awazu-machi, Komatsu-shi, Ishikawa prefecture  
 ✈️ Approximately twenty-five (25) minutes from Komatsu Airport by car  
 🛏️ 68 guest rooms in total/ 43 guest rooms with bath and shower  
 🛀 Open-air bath • Large public bath • Sauna  
 📶 Free WiFi is available in the lobby and all guest rooms

**Hokuriku** Ishikawa prefecture • Yamanaka Onsen  
**JAPANESE HOTEL FOR WOMEN-ONLY HANA • SAICHORAKU**

I-93 Korogi-machi, Yamanaka Onsen, Kaga-shi, Ishikawa prefecture  
 ✈️ Approximately thirty-five (35) minutes from Komatsu Airport by car  
 🛏️ 71 guest rooms in total/ 58 guest rooms with bath and shower  
 🛀 Open-air bath • Large public bath • Sauna  
 📶 Free WiFi is available in the lobby

**Hokuriku** Ishikawa prefecture • Yamanaka Onsen  
**YAMANAKA GRAND HOTEL**

Ru-15-4 Ueno-machi, Yamanaka Onsen, Kaga-shi, Ishikawa prefecture  
 ✈️ Approximately thirty-five (35) minutes from Komatsu Airport by car  
 🛏️ 85 guest rooms in total/ 66 guest rooms with bath and shower  
 🛀 Open-air bath • Large public bath • Sauna  
 📶 Free WiFi is available in the lobby and all guest rooms

**Hokuriku** Ishikawa prefecture • Katayamazu Onsen  
**NEW MARUYA HOTEL HONKAN • BEKKAN**

[HONKAN] A2-1 Katayamazu Onsen, Kaga-shi, Ishikawa prefecture  
 [BEKKAN] 1-2 Dogo, Katayamazu Onsen, Kaga-shi, Ishikawa prefecture  
 ✈️ Approximately twenty (20) minutes from Komatsu Airport to Honkan • Bekkan by car  
 🛏️ [HONKAN • BEKKAN] 110 guest rooms in total/  
 [HONKAN • BEKKAN] 92 guest rooms with bath and shower  
 🛀 Open-air bath • Large public bath • Mist sauna • footbath  
 📶 Free WiFi is available in the lobby and all guest rooms

**Hokuriku** Ishikawa prefecture • Wakura Onsen  
**KINPASO**

91-1 Yobu, Wakura-machi, Nanao-shi, Ishikawa prefecture  
 ✈️ Approximately fifty (50) minutes from Noto Satoyama Airport by car  
 🛏️ 113 guest rooms in total/ 108 guest rooms with bath and shower  
 🛀 Open-air bath • Large public bath • Sauna  
 📶 Free WiFi is available in the lobby and all guest rooms

**Hokuriku** Fukui prefecture • Awara Onsen  
**SEIUNKAKU**

68-1, Futaomote, Awara-shi, Fukui prefecture  
 ✈️ Approximately sixty (60) minutes from Komatsu Airport by car  
 🛏️ 86 guest rooms in total/ 56 guest rooms with bath and shower  
 🛀 Open-air bath • Large public bath • Sauna  
 📶 Free WiFi is available in the lobby

**Tokai** Gifu prefecture • Gero Onsen  
**GERO SAICHORAKU HONKAN**

1605 Koden, Gero-shi, Gifu prefecture  
 ✈️ Approximately two (2) hours and forty (40) minutes from Chubu Centrair International Airport by car  
 🛏️ 72 guest rooms in total/ 64 guest rooms with bath and shower  
 🛀 Large public bath • Sauna • Footbath  
 📶 Free WiFi is available in the lobby

**Tokai** Gifu prefecture • Gero Onsen  
**GERO SAICHORAKU BEKKAN**

535, Yunoshima, Gero-shi, Gifu prefecture  
 ✈️ Approximately two (2) hours and forty (40) minutes from Chubu Centrair International Airport by car  
 🛏️ 83 guest rooms in total/ 47 guest rooms with bath and shower  
 🛀 Open-air bath • Large public bath • Sauna  
 📶 Free WiFi is available in the lobby and all guest rooms

**Tokai** Gifu prefecture • Enakyo Onsen  
**ENAKYO KOKUSAI HOTEL**

2709-399 Oi-cho, Ena-shi, Gifu prefecture  
 ✈️ Approximately one (1) hour and forty (40) minutes from Chubu Centrair International Airport by car  
 🛏️ 100 guest rooms in total/ 66 guest rooms with bath and shower  
 🛀 Open-air bath • Large public bath  
 📶 Free WiFi is available in the lobby and all guest rooms

**Tokai** Mie prefecture  
**RESORT HOTEL TOBA SAICHORAKU**

610 Shiroyama, Ohama-cho, Toba-shi, Mie prefecture  
 ✈️ Approximately two (2) hours and ten (10) minutes from Chubu Centrair International Airport by car  
 🛏️ 90 guest rooms in total/ 69 guest rooms with bath and shower  
 🛀 Large public bath • Sauna • Footbath  
 📶 Free WiFi is available in the lobby

**Tokai** Mie prefecture  
**RESORT HOTEL SHIMA SAICHORAKU**

687-2 Shinmei, Ago-cho, Shima-shi, Mie prefecture  
 ✈️ Approximately two (2) hours and thirty (30) minutes from Chubu Centrair International Airport by car  
 🛏️ 100 guest rooms in total/ 51 guest rooms with bath and shower  
 🛀 Large public bath • Sauna  
 📶 Free WiFi is available in the lobby and all guest rooms

**Kinki** Wakayama prefecture • Nankikatsuura Onsen  
**KOSHINOYU**

1108 Yukawa, Nankikatsuura-cho, Higashimuro-gun, Wakayama prefecture  
 ✈️ Approximately three (3) hours and thirty (30) minutes from Chubu Centrair International Airport by car  
 🛏️ 89 guest rooms in total/ 37 guest rooms with bath and shower  
 🛀 Open-air bath • Open-air bath in jungle • Large public bath • Sauna • footbath in garden  
 📶 Free WiFi is available in the lobby

**Kinki** Wakayama prefecture • Nankishirahama Onsen  
**HOTEL SENJO**

1680-1 Shirahama-cho, Nishimuro-gun, Wakayama prefecture  
 ✈️ Approximately one (1) hour and forty-five (45) minutes from Kansai International Airport by car  
 🛏️ 145 guest rooms in total/ 98 guest rooms with bath and shower  
 🛀 Open-air bath • Large public bath • Sauna  
 📶 Free WiFi is available in the lobby and all guest rooms

**Kinki** Wakayama prefecture • Nankishirahama Onsen  
**SHIRAHAMA GYOEN**

1011 Shirahama-cho, Nishimuro-gun, Wakayama prefecture  
 ✈️ Approximately one (1) hour and forty-five (45) minutes from Kansai International Airport by car  
 🛏️ 159 guest rooms in total/ 90 guest rooms with bath and shower  
 🛀 Open-air bath • Large public bath • Sauna • footbath in garden  
 📶 Free WiFi is available in the lobby

**Kinki** Hyogo prefecture • Yumura Onsen  
**MIYOSHIYA**

1671-3 Yu, Shinonsen-cho, Mikata-gun, Hyogo prefecture  
 ✈️ Approximately two (2) hours and thirty (30) minutes from Yonago Kitaro Airport by car  
 🛏️ 86 guest rooms in total/ 50 guest rooms with bath and shower  
 🛀 Open-air bath • Large public bath  
 📶 Free WiFi is available in the lobby

**Chugoku** Okayama prefecture • Yubara Onsen  
**TERUNOYU**

1429-2 Toyosaka, Maniwa-shi, Okayama prefecture  
 ✈️ Approximately one (1) hour and fifteen (15) minutes from Yonago Kitaro Airport by car  
 🛏️ 62 guest rooms in total/ 8 guest rooms with bath and shower  
 🛀 Open-air bath in garden • Large public bath • Mist sauna  
 📶 Free WiFi is available in the lobby

**Chugoku** Tottori prefecture • Kaike Onsen  
**KAIKE SAICHORAKU**

4-29-11 Kaike Onsen, Yonago-shi, Tottori prefecture  
 ✈️ Approximately twenty-five (25) minutes from Yonago Kitaro Airport by car  
 🛏️ 81 guest rooms in total/ 36 guest rooms with bath and shower  
 🛀 Large public bath • Rock bath • Sauna • Mist sauna • Footbath  
 📶 Free WiFi is available in the lobby and all guest rooms

**Shikoku** Ehime prefecture • Dogo Onsen  
**DOGO SAICHORAKU**

112-1 Dogohimezuka, Matsuyama-shi, Ehime prefecture  
 ✈️ Approximately thirty-five (35) minutes from Matsuyama Airport by car  
 🛏️ 83 guest rooms in total/ 77 guest rooms with bath and shower  
 🛀 Open-air bath • Large public bath • Sauna  
 📶 Free WiFi is available in the lobby

**Kyushu** Saga prefecture • Ureshino Onsen  
**URESHINOKAN**

2091 Otsu, Shimajuku, Ureshino-machi, Ureshino-shi, Saga prefecture  
 ✈️ Approximately one (1) hour and twenty (20) minutes from Fukuoka Airport by car  
 🛏️ 100 guest rooms in total/ 78 guest rooms with bath and shower  
 🛀 Open-air bath • Large public bath • Sauna • Footbath cafe  
 📶 Free WiFi is available in the lobby and all guest rooms



# The hotels which you can enjoy Kaiseki

You can enjoy our traditional Japanese hot-spring hotels, thier tastes and "Japanese cuisine" as an Intangible Cultural Heritage. In the long history, we offer the style of a new hot-spring hotel by the hospitality "Omotenashi" depending on each land. We offer the hot spring facilities which you can choose the spring quality and location according to your tastes. Please enjoy the lovingly prepared cuisine called "Kaiseki" which ingredients are natural, high quality and chosen according to the season.

Ishikawa prefecture • Yamanaka Onsen  
**YOSHINOYA IROKUEN**

Ni-5 Minami-machi, Yamanaka Onsen, Kaga-shi, Ishikawa prefecture  
 ✈️ Approximately thirty-five (35) minutes from Komatsu Airport by car  
 🛏️ 75 guest rooms in total/ 46 guest rooms with bath and shower  
 🛀 Open-air bath • Large public bath • Sauna  
 📶 Free WiFi is available in the lobby

Ishikawa prefecture • Katayamazu Onsen  
**YATAYA SHOTOEN**

Se1-1 Katayamazu Onsen, Kaga-shi, Ishikawa prefecture  
 ✈️ Approximately twenty (20) minutes from Komatsu Airport by car  
 🛏️ 39 guest rooms in total/ 39 guest rooms with bath and shower  
 🛀 Open-air bath • Large public bath  
 📶 Free WiFi is available in the lobby

Tottori prefecture • Misasa Onsen  
**SAIKIBEKKAN**

70 Yamada, Misasa-cho, Tohaku-gun, Tottori prefecture  
 ✈️ Approximately one (1) hour and thirty (30) minutes from Yonago Kitaro Airport by car  
 🛏️ 70 guest rooms in total/ 66 guest rooms with bath and shower  
 🛀 Open-air bath • Large public bath • Charter bath  
 📶 Free WiFi is available in the lobby and all guest rooms